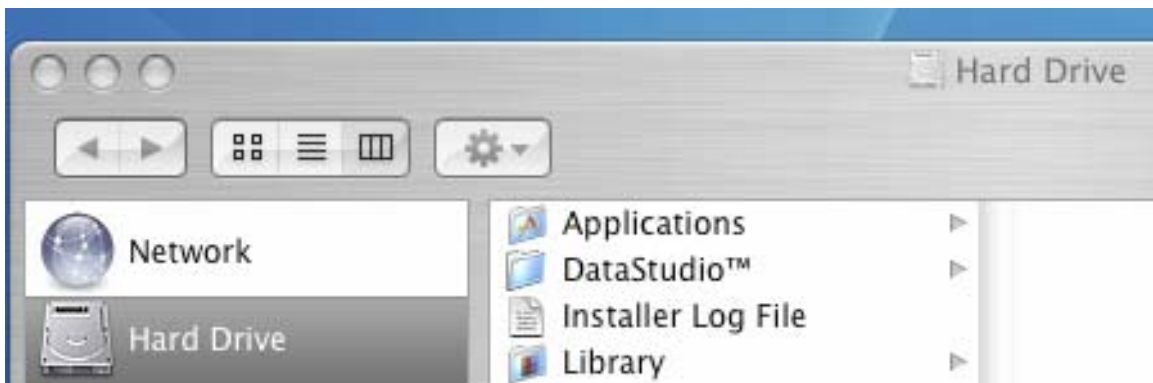


Job Aide to Connect to ROHAN and Create a public_html Folder

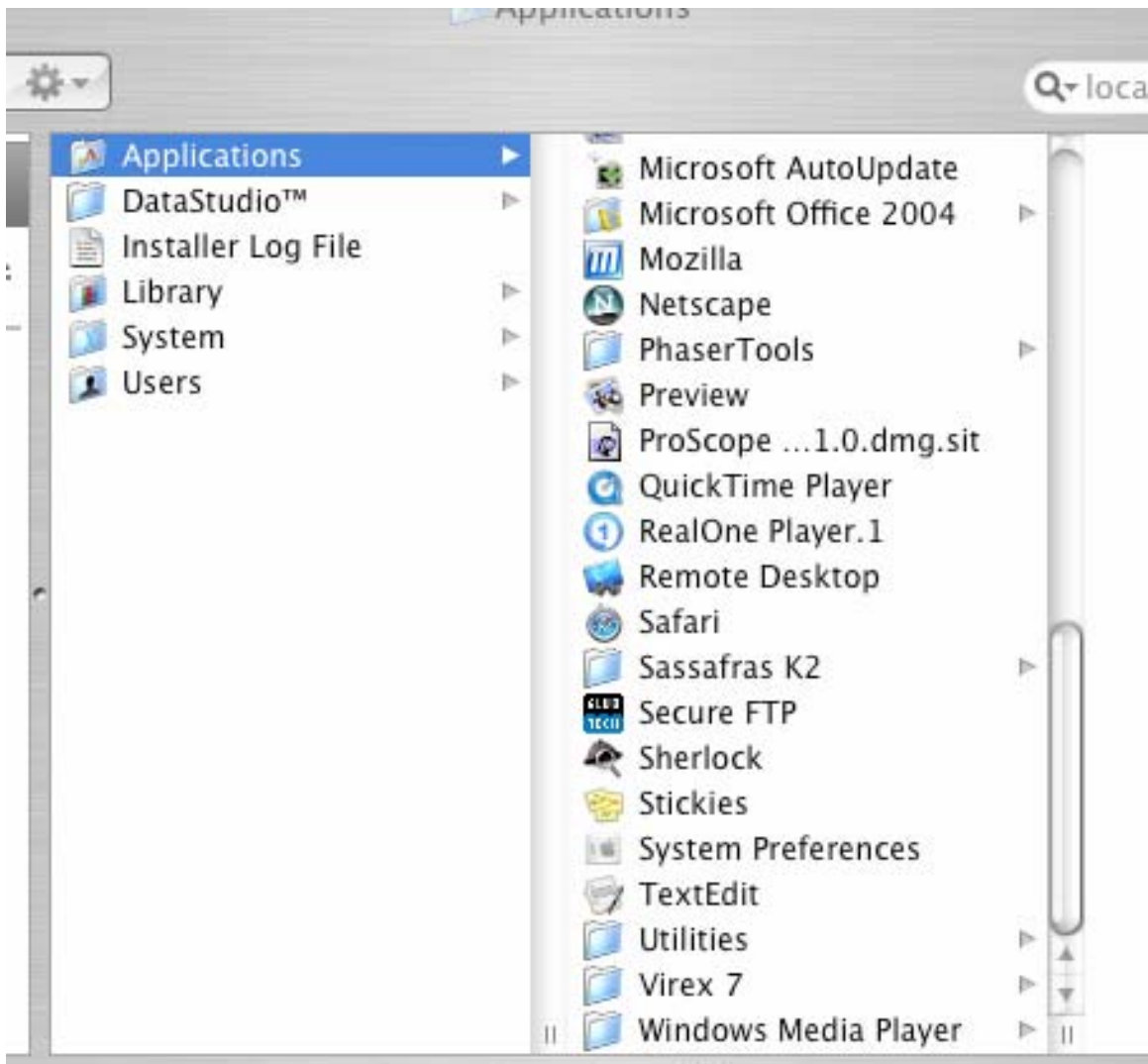
1- Double click on the hard drive icon on the desktop



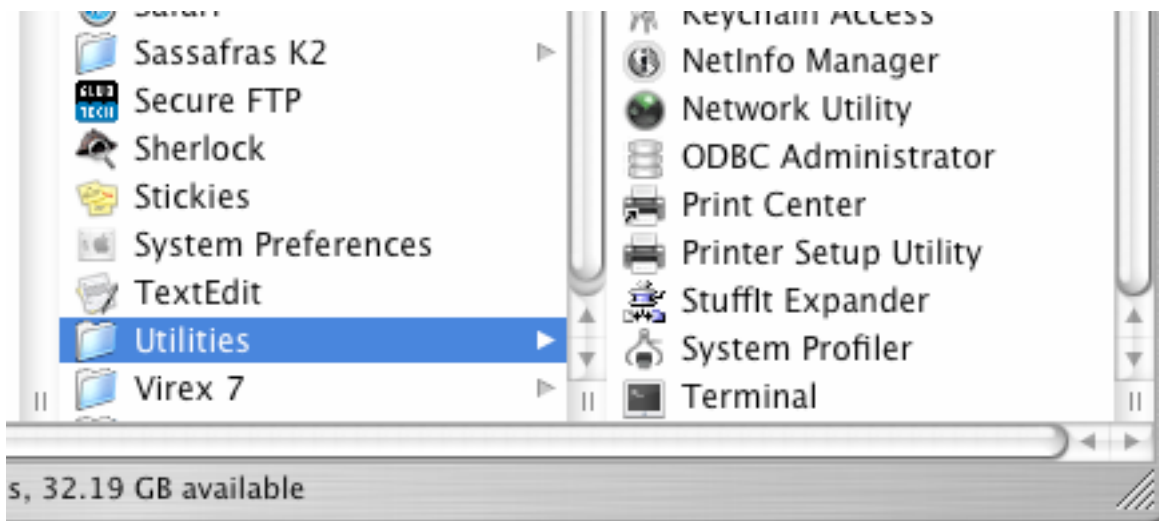
2- Find “Applications” on the menu and click on it



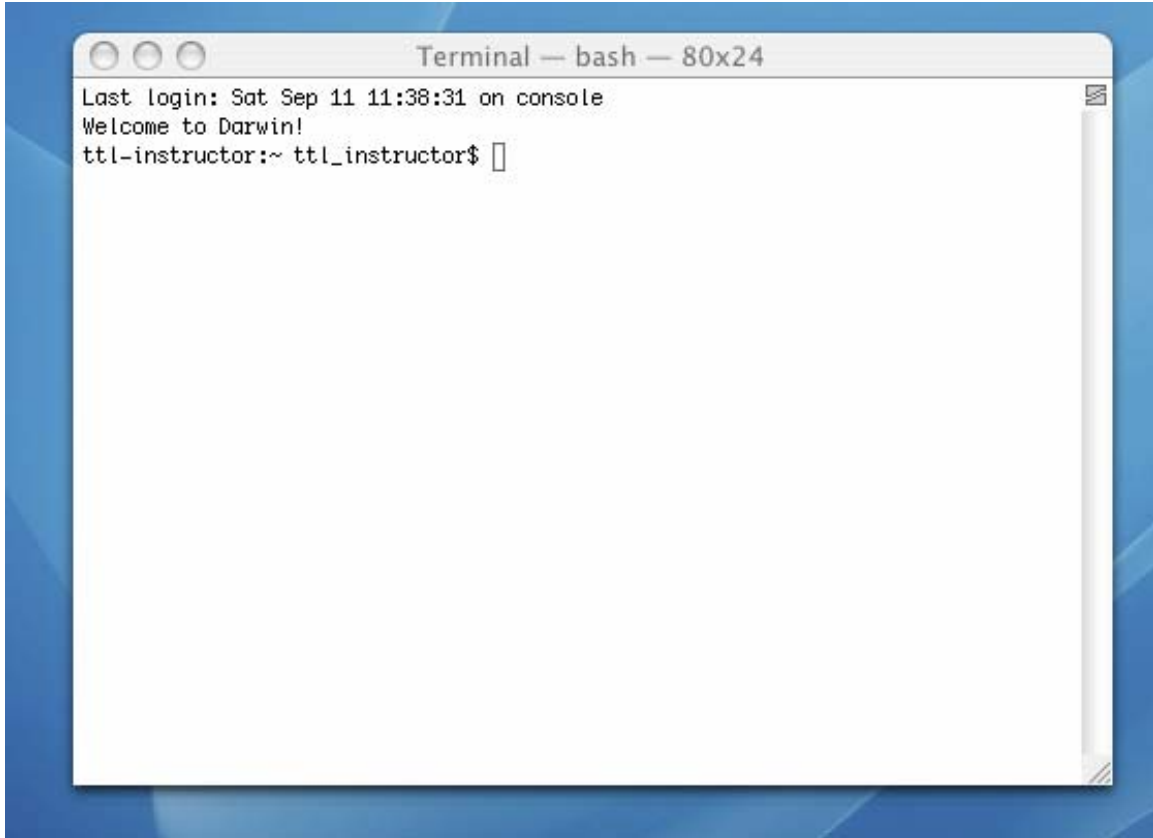
3- Scroll down to find “Utilities” and click on it



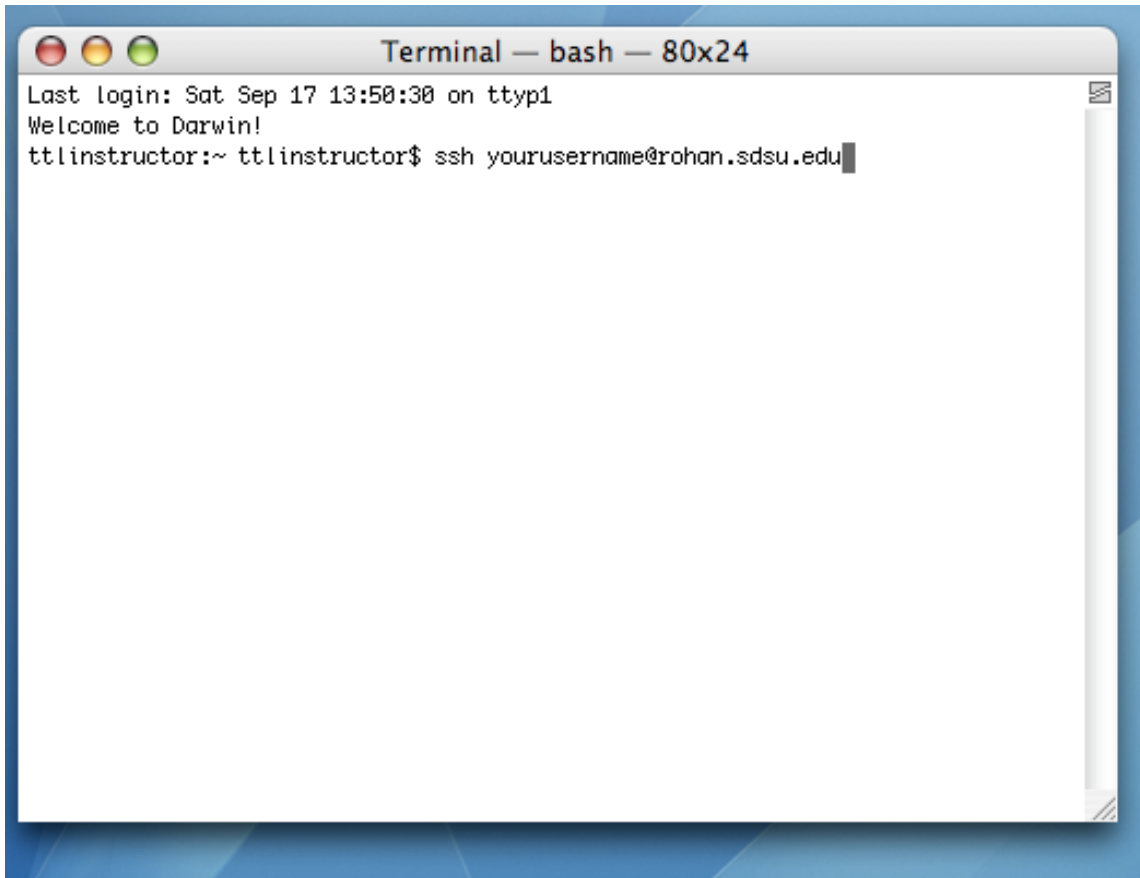
4- Scroll down to find "Terminal" and click on it



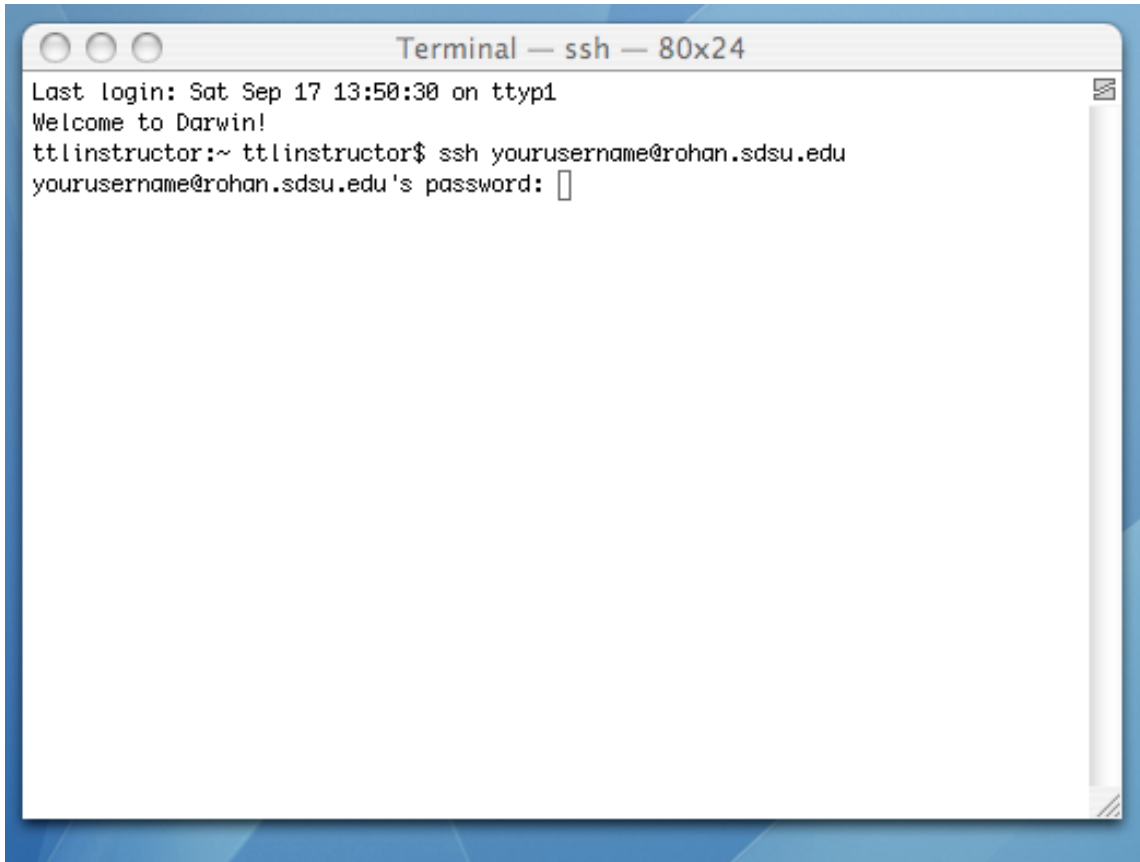
5- Double click on "Terminal." You should see the following window open:



6- Type in `ssh yourusername@rohan.sdsu.edu` and press return.

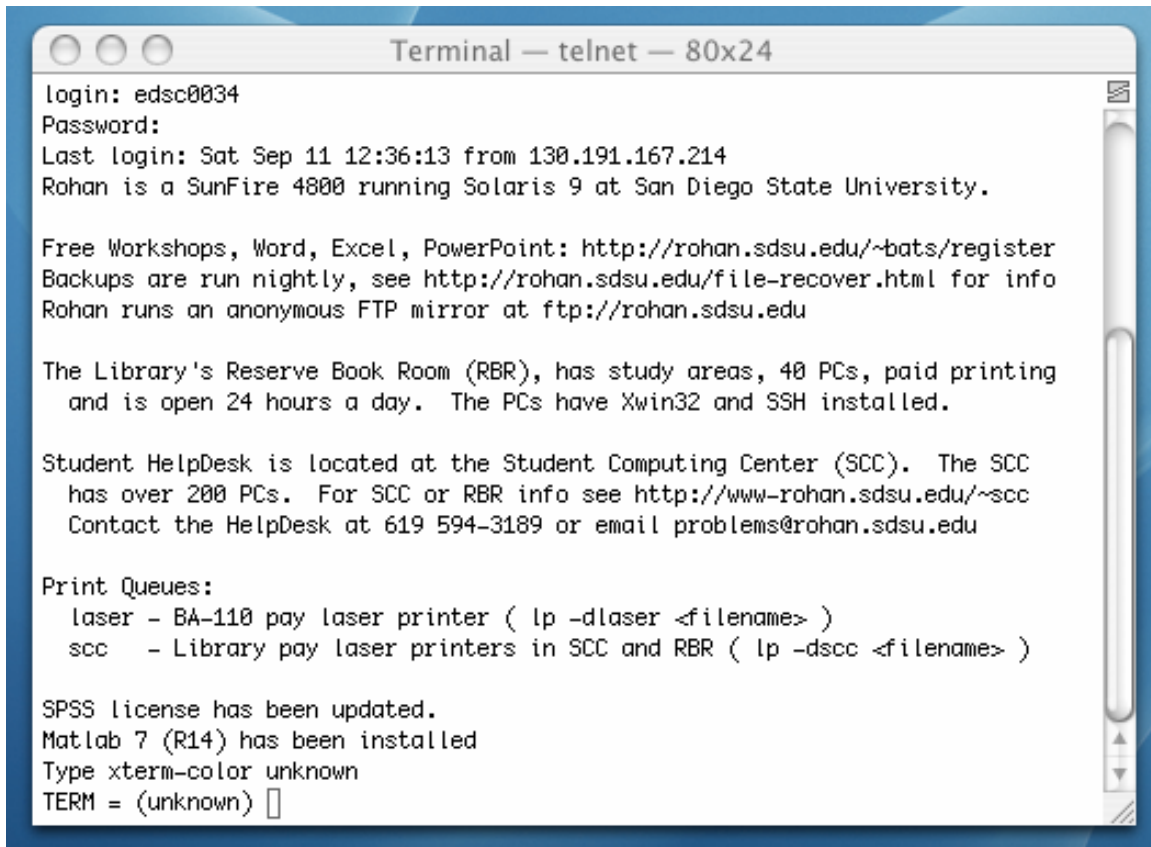


7- You should see the password prompt.

A screenshot of a macOS Terminal window titled "Terminal — ssh — 80x24". The window shows the following text: "Last login: Sat Sep 17 13:50:30 on ttty1", "Welcome to Darwin!", "ttlinstructor:~ ttlinstructor\$ ssh yourusername@rohan.sdsu.edu", and "yourusername@rohan.sdsu.edu's password: []". The cursor is positioned at the end of the password prompt. The window has a blue title bar and a scroll bar on the right side.

```
Terminal — ssh — 80x24
Last login: Sat Sep 17 13:50:30 on ttty1
Welcome to Darwin!
ttlinstructor:~ ttlinstructor$ ssh yourusername@rohan.sdsu.edu
yourusername@rohan.sdsu.edu's password: [ ]
```

8- Enter your password at the password prompt and press return. When you type in your password, the cursor does not move, and your password is masked. You should see the "TERM = (unknown)" prompt

A terminal window titled "Terminal — telnet — 80x24" with three window control buttons in the top-left corner. The terminal displays the following text:

```
login: edsc0034
Password:
Last login: Sat Sep 11 12:36:13 from 130.191.167.214
Rohan is a SunFire 4800 running Solaris 9 at San Diego State University.

Free Workshops, Word, Excel, PowerPoint: http://rohan.sdsu.edu/~bats/register
Backups are run nightly, see http://rohan.sdsu.edu/file-recover.html for info
Rohan runs an anonymous FTP mirror at ftp://rohan.sdsu.edu

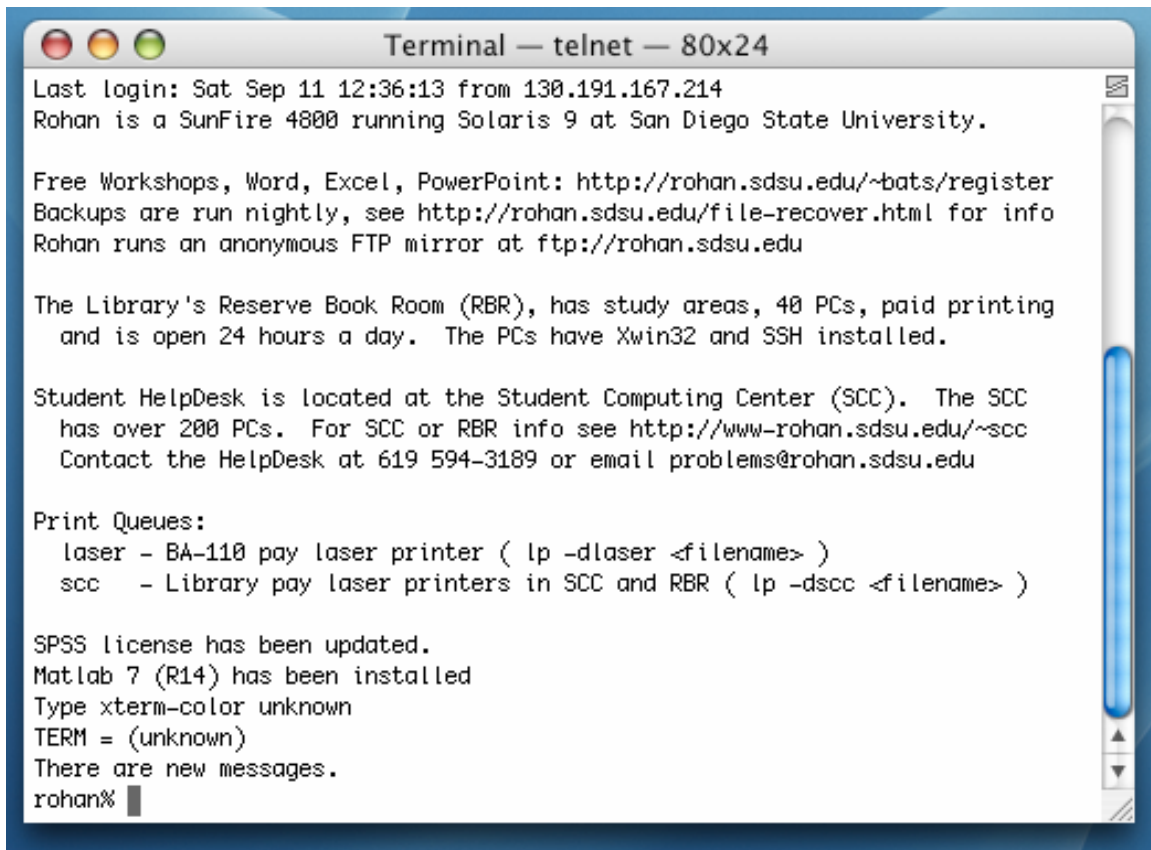
The Library's Reserve Book Room (RBR), has study areas, 40 PCs, paid printing
and is open 24 hours a day. The PCs have Xwin32 and SSH installed.

Student HelpDesk is located at the Student Computing Center (SCC). The SCC
has over 200 PCs. For SCC or RBR info see http://www-rohan.sdsu.edu/~scc
Contact the HelpDesk at 619 594-3189 or email problems@rohan.sdsu.edu

Print Queues:
  laser - BA-110 pay laser printer ( lp -dlaser <filename> )
  scc    - Library pay laser printers in SCC and RBR ( lp -dscc <filename> )

SPSS license has been updated.
Matlab 7 (R14) has been installed
Type xterm-color unknown
TERM = (unknown) □
```

9- At the "TERM = (unknown)" prompt press return. You should see the "rohan%" prompt.

A terminal window titled "Terminal — telnet — 80x24" with a standard macOS-style title bar. The window contains the following text:

```
Last login: Sat Sep 11 12:36:13 from 130.191.167.214
Rohan is a SunFire 4800 running Solaris 9 at San Diego State University.

Free Workshops, Word, Excel, PowerPoint: http://rohan.sdsu.edu/~bats/register
Backups are run nightly, see http://rohan.sdsu.edu/file-recover.html for info
Rohan runs an anonymous FTP mirror at ftp://rohan.sdsu.edu

The Library's Reserve Book Room (RBR), has study areas, 40 PCs, paid printing
and is open 24 hours a day. The PCs have Xwin32 and SSH installed.

Student HelpDesk is located at the Student Computing Center (SCC). The SCC
has over 200 PCs. For SCC or RBR info see http://www-rohan.sdsu.edu/~scc
Contact the HelpDesk at 619 594-3189 or email problems@rohan.sdsu.edu

Print Queues:
  laser - BA-110 pay laser printer ( lp -dlaser <filename> )
  scc    - Library pay laser printers in SCC and RBR ( lp -dscc <filename> )

SPSS license has been updated.
Matlab 7 (R14) has been installed
Type xterm-color unknown
TERM = (unknown)
There are new messages.
rohan% █
```

10- At the rohan% prompt type in:

```
chmod 711 ~ "press return"
mkdir public_html "press return"
chmod 711 ~/public_html "press return"
logout "press return"
```