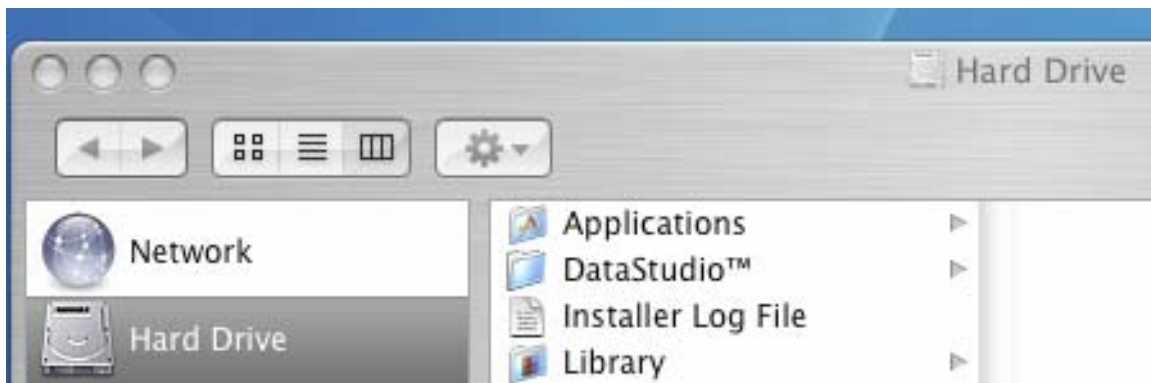


Job Aide to Telnet to ROHAN and Create a public_html Folder

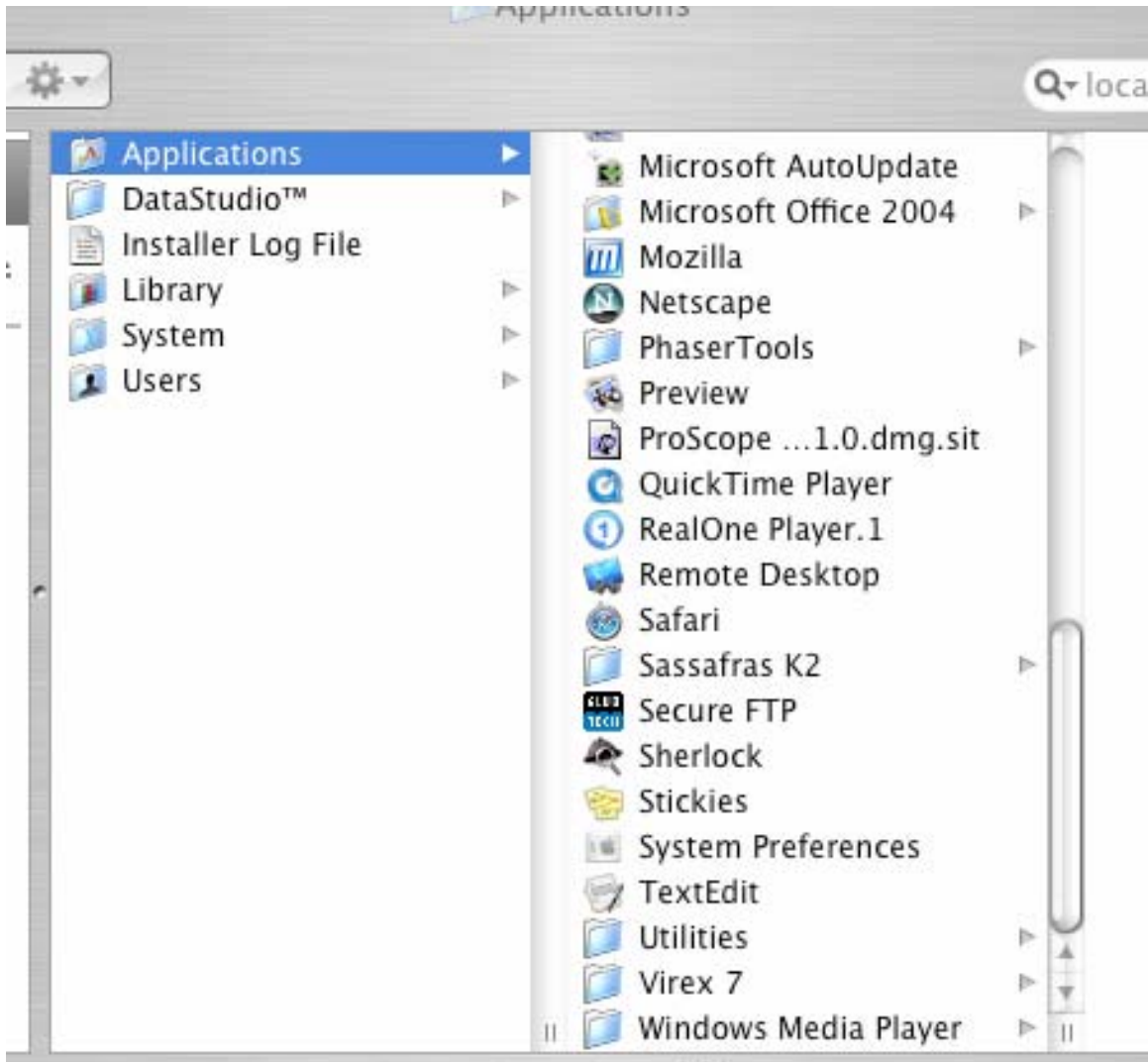
1- Double click on the hard drive icon on the desktop



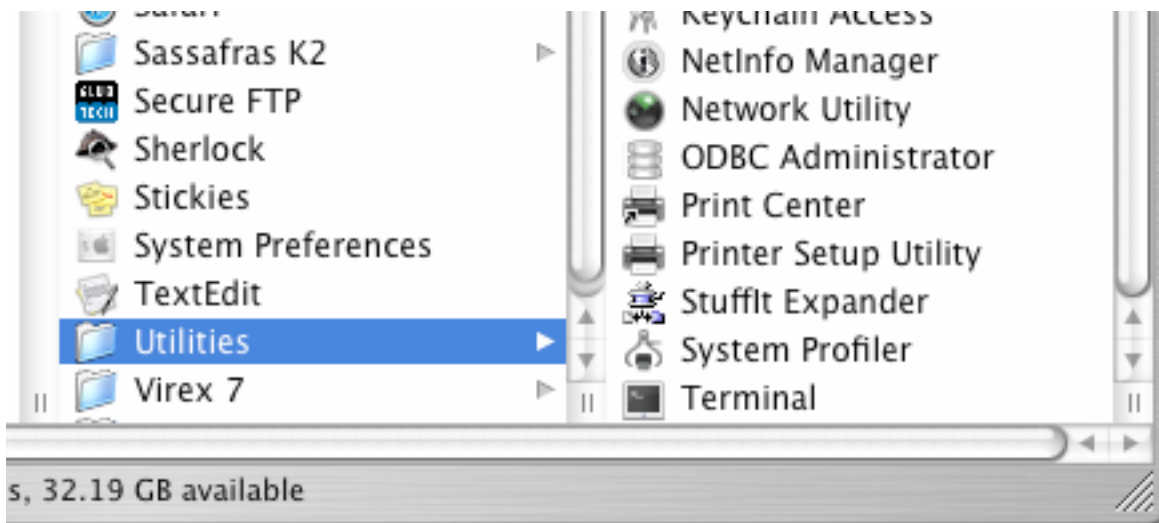
2- Find "Applications" on the menu and click on it



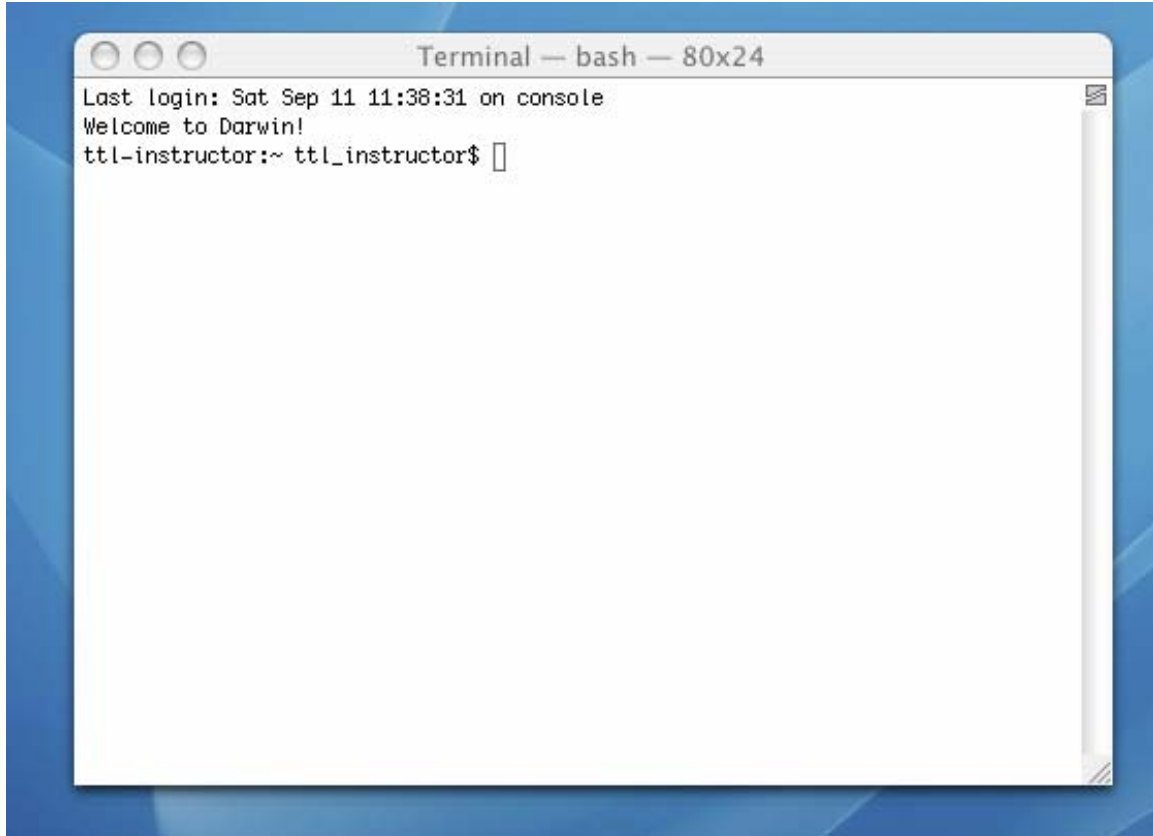
3- Scroll down to find "Utilities" and click on it



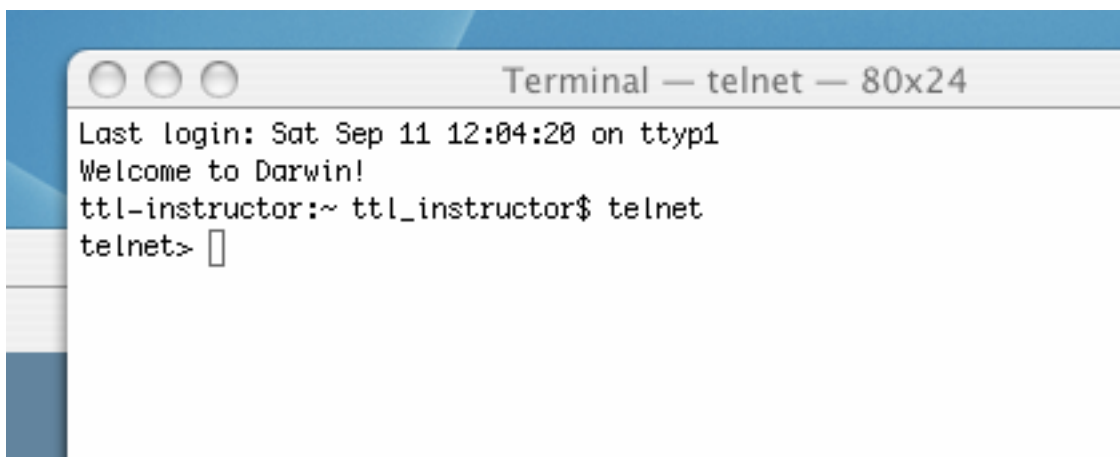
4- Scroll down to find "Terminal" and click on it



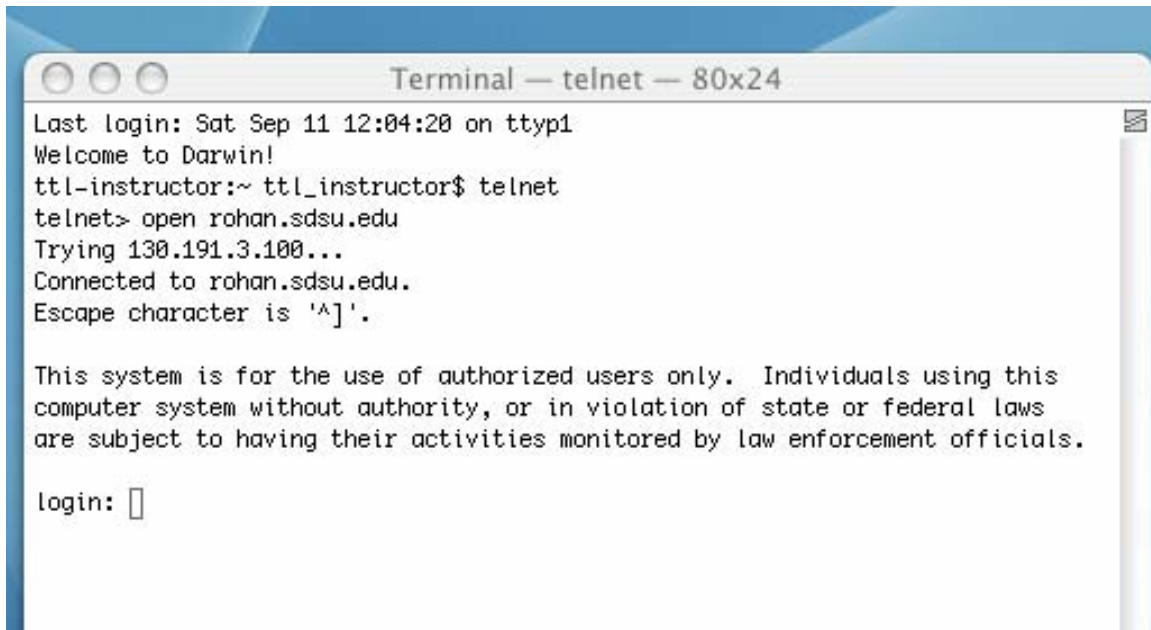
5- Double click on “Terminal.” You should see the following window open:



6- Type in “telnet” and press return. You should see the telnet prompt:



7- At the telnet prompt type in “open rohan.sdsu.edu” You should see the login prompt.

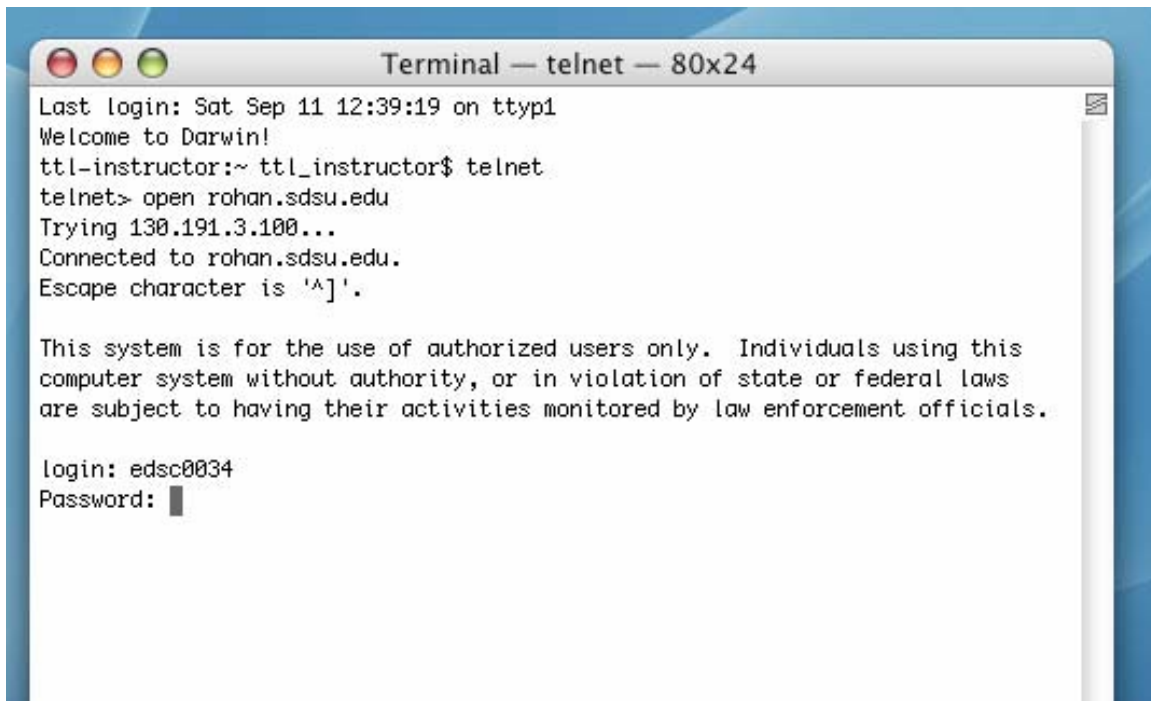


```
Terminal — telnet — 80x24
Last login: Sat Sep 11 12:04:20 on ttty1
Welcome to Darwin!
ttl-instructor:~ ttl_instructor$ telnet
telnet> open rohan.sdsu.edu
Trying 130.191.3.100...
Connected to rohan.sdsu.edu.
Escape character is '^]'.

This system is for the use of authorized users only. Individuals using this
computer system without authority, or in violation of state or federal laws
are subject to having their activities monitored by law enforcement officials.

login: █
```

8- At the login prompt type in your username. You should see the password prompt

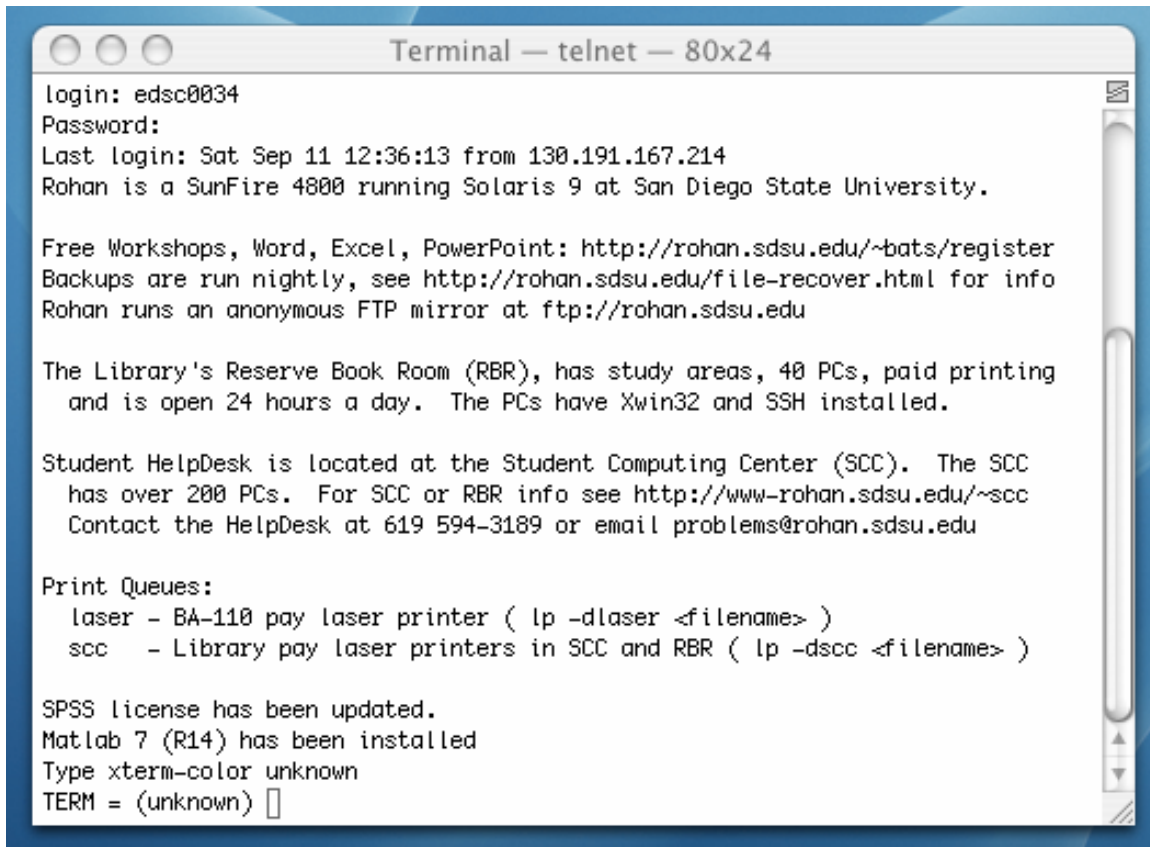


```
Terminal — telnet — 80x24
Last login: Sat Sep 11 12:39:19 on ttty1
Welcome to Darwin!
ttl-instructor:~ ttl_instructor$ telnet
telnet> open rohan.sdsu.edu
Trying 130.191.3.100...
Connected to rohan.sdsu.edu.
Escape character is '^]'.

This system is for the use of authorized users only. Individuals using this
computer system without authority, or in violation of state or federal laws
are subject to having their activities monitored by law enforcement officials.

login: edsc0034
Password: █
```

9- Enter your password at the password prompt and press return. You should see the “TERM = (unknown)” prompt

A terminal window titled "Terminal — telnet — 80x24" with a blue border. The text inside shows a telnet session with login information, system details, and various service announcements. The prompt "TERM = (unknown) " is visible at the bottom.

```
login: edsc0034
Password:
Last login: Sat Sep 11 12:36:13 from 130.191.167.214
Rohan is a SunFire 4800 running Solaris 9 at San Diego State University.

Free Workshops, Word, Excel, PowerPoint: http://rohan.sdsu.edu/~bats/register
Backups are run nightly, see http://rohan.sdsu.edu/file-recover.html for info
Rohan runs an anonymous FTP mirror at ftp://rohan.sdsu.edu

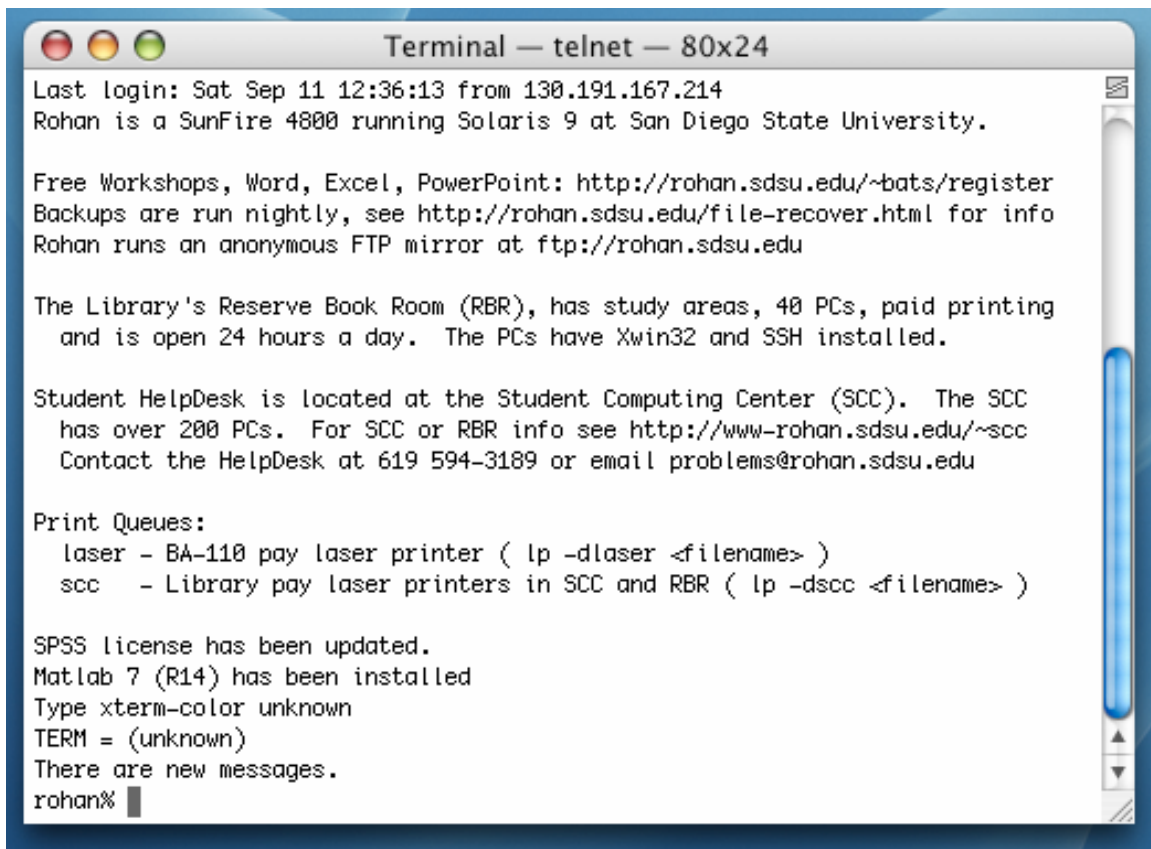
The Library's Reserve Book Room (RBR), has study areas, 40 PCs, paid printing
and is open 24 hours a day. The PCs have Xwin32 and SSH installed.

Student HelpDesk is located at the Student Computing Center (SCC). The SCC
has over 200 PCs. For SCC or RBR info see http://www-rohan.sdsu.edu/~scc
Contact the HelpDesk at 619 594-3189 or email problems@rohan.sdsu.edu

Print Queues:
  laser - BA-110 pay laser printer ( lp -dlaser <filename> )
  scc    - Library pay laser printers in SCC and RBR ( lp -dscc <filename> )

SPSS license has been updated.
Matlab 7 (R14) has been installed
Type xterm-color unknown
TERM = (unknown) 
```

10- At the “TERM = (unknown)” prompt press return. You should see the “rohan%” prompt.

A terminal window titled "Terminal — telnet — 80x24" with a standard macOS-style title bar. The window contains the following text:

```
Last login: Sat Sep 11 12:36:13 from 130.191.167.214
Rohan is a SunFire 4800 running Solaris 9 at San Diego State University.

Free Workshops, Word, Excel, PowerPoint: http://rohan.sdsu.edu/~bats/register
Backups are run nightly, see http://rohan.sdsu.edu/file-recover.html for info
Rohan runs an anonymous FTP mirror at ftp://rohan.sdsu.edu

The Library's Reserve Book Room (RBR), has study areas, 40 PCs, paid printing
and is open 24 hours a day. The PCs have Xwin32 and SSH installed.

Student HelpDesk is located at the Student Computing Center (SCC). The SCC
has over 200 PCs. For SCC or RBR info see http://www-rohan.sdsu.edu/~scc
Contact the HelpDesk at 619 594-3189 or email problems@rohan.sdsu.edu

Print Queues:
  laser - BA-110 pay laser printer ( lp -dlaser <filename> )
  scc    - Library pay laser printers in SCC and RBR ( lp -dscc <filename> )

SPSS license has been updated.
Matlab 7 (R14) has been installed
Type xterm-color unknown
TERM = (unknown)
There are new messages.
rohan% █
```

11- At the rohan% prompt type in:

```
chmod 711 ~ "press return"
mkdir public_html "press return"
chmod 711 ~/public_html "press return"
logout "press return"
```