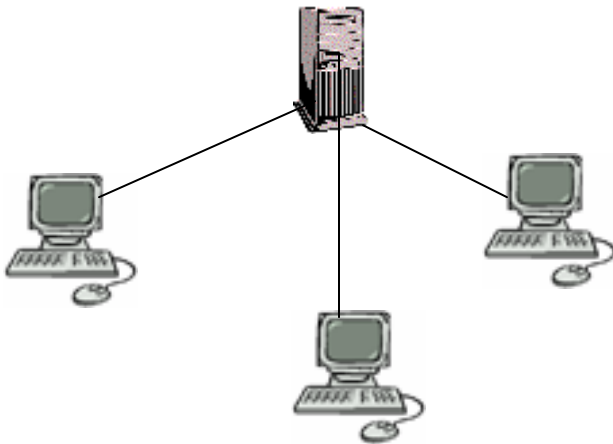


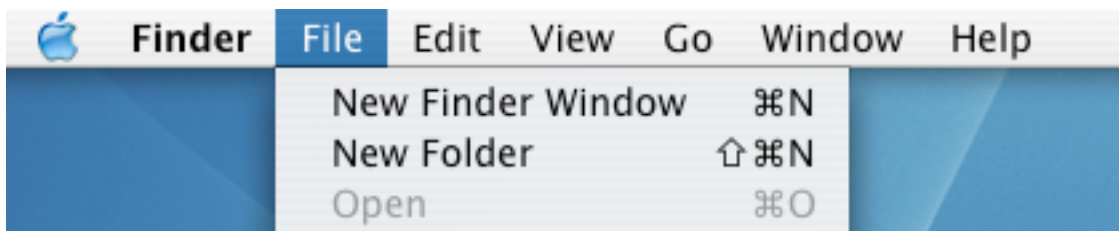
Job Aide for File Transfer Protocol (FTP) using Fetch

The Internet, at its basic level, consists of computers that serve files, and client computers that receive and process files from the servers.

File transfer protocol or FTP is one of the rudimentary means of placing files on the server computers, and receiving files from servers. In this exercise, you will place your first assignment on ROHAN, a server computer. The instructor, using his client computer, then will be able to download your file and look at it.



1- Create a new folder on the desktop

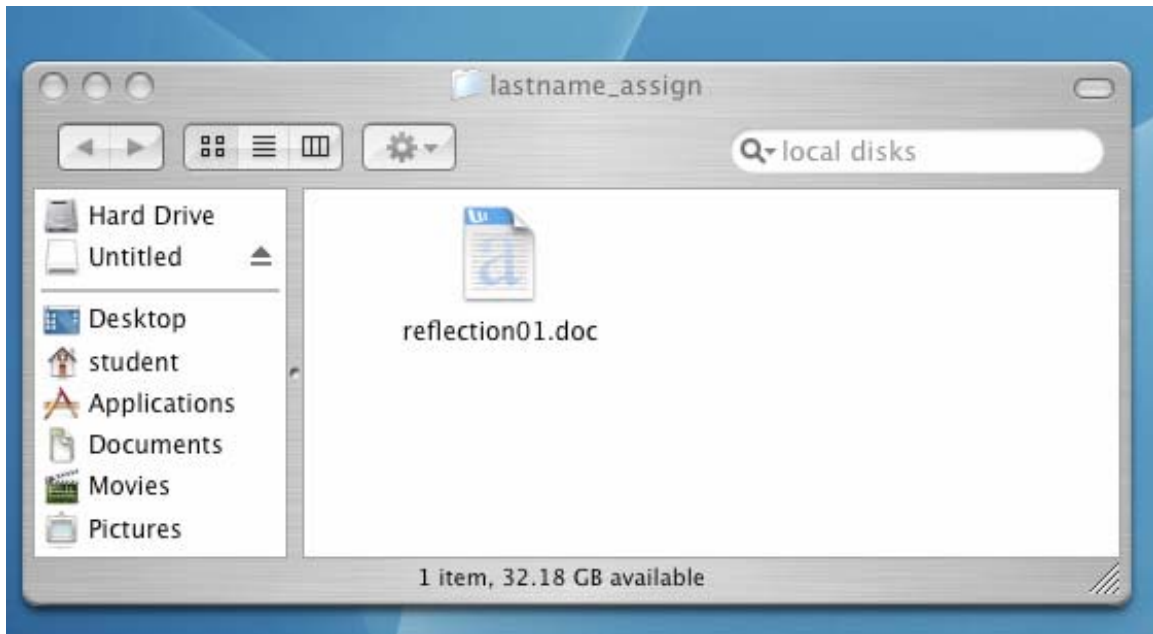




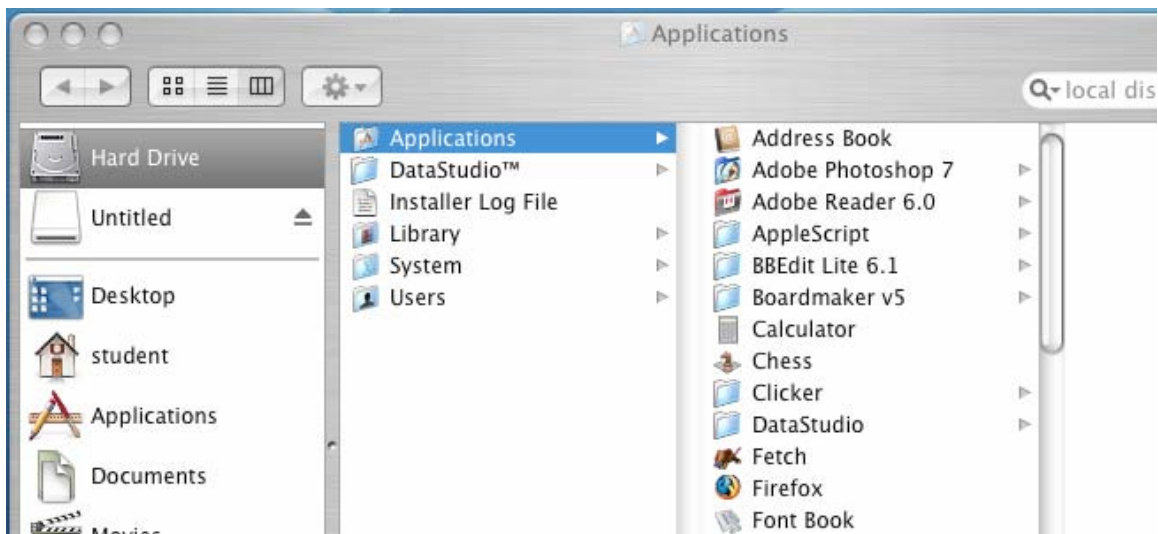
2- Name the new folder "yourlastname_assign"



3- Place the word file of your first reflection assignment in the folder

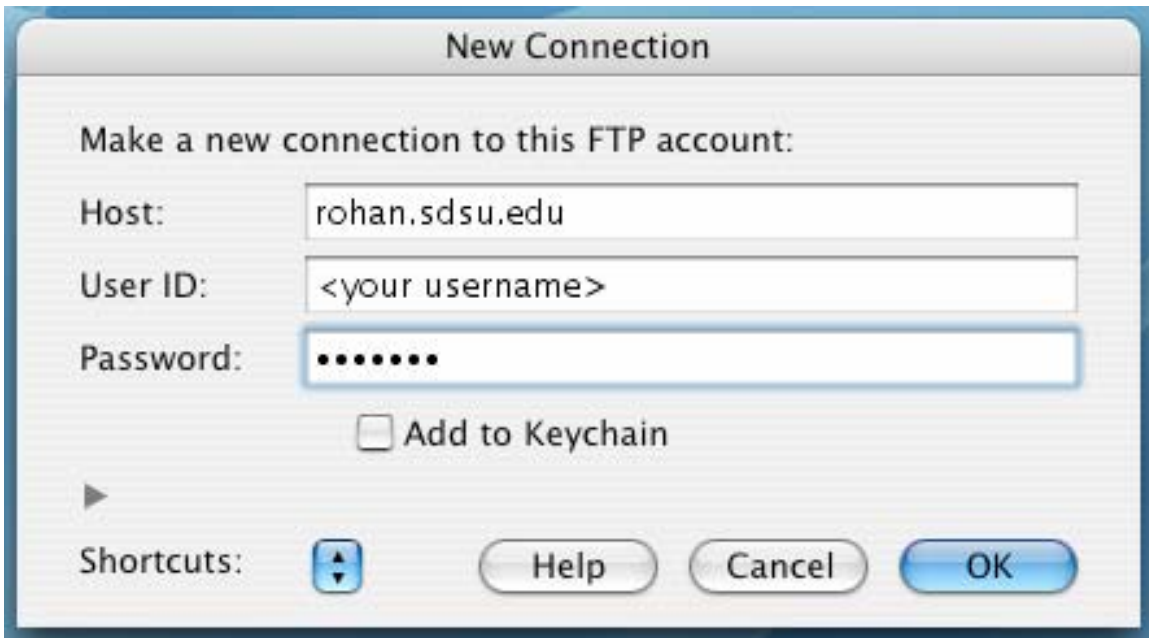
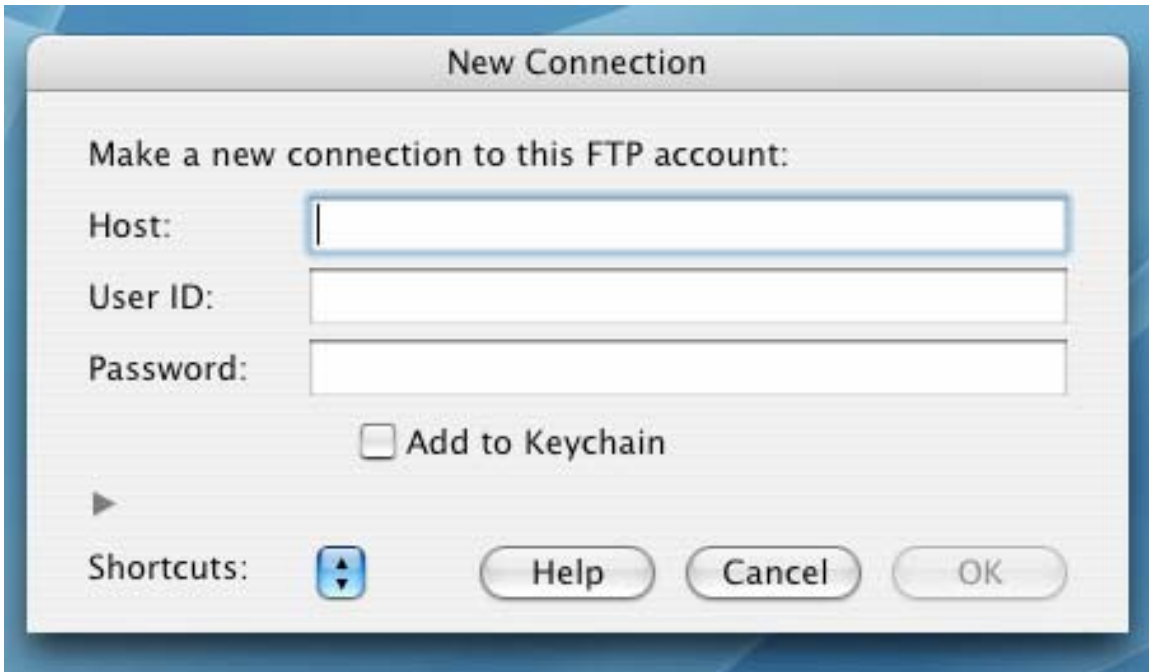


4- Open Fetch from the Hard Drive Application menu

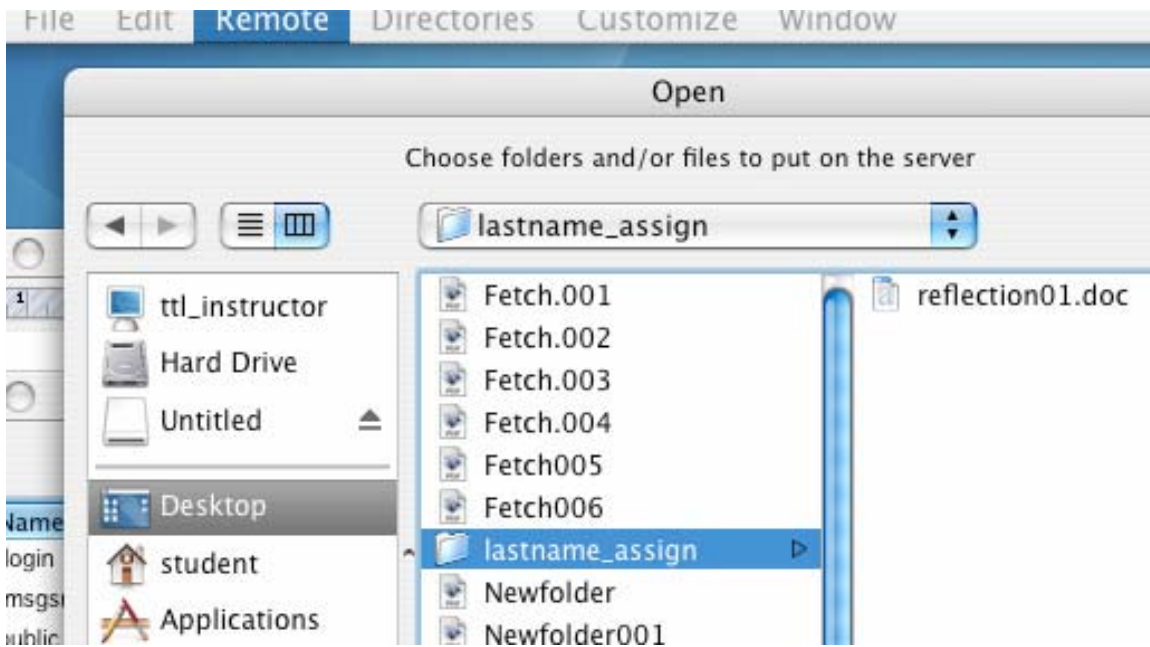
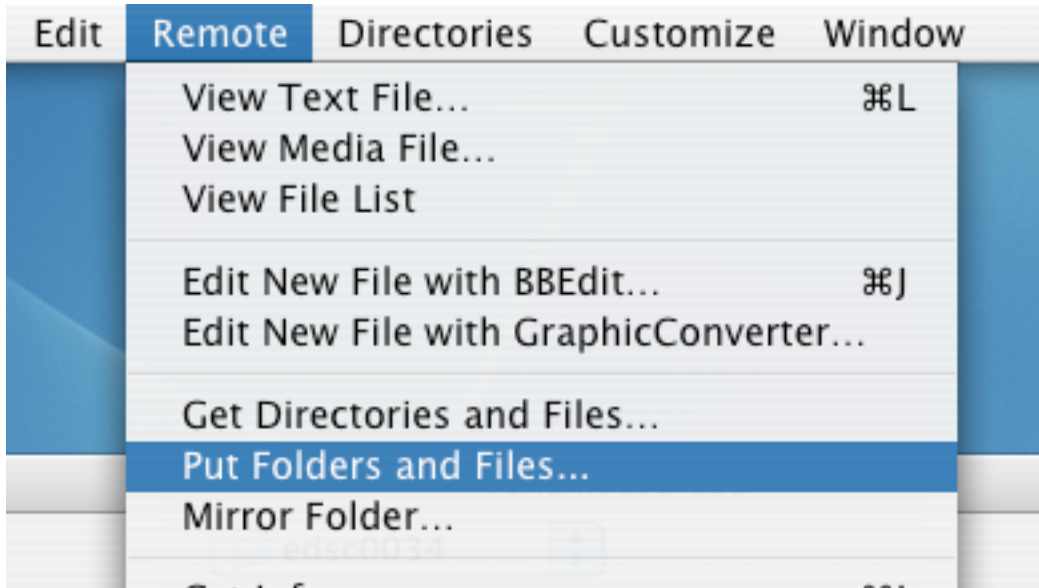


5- Enter "rohan.sdsu.edu" in the "Host" window

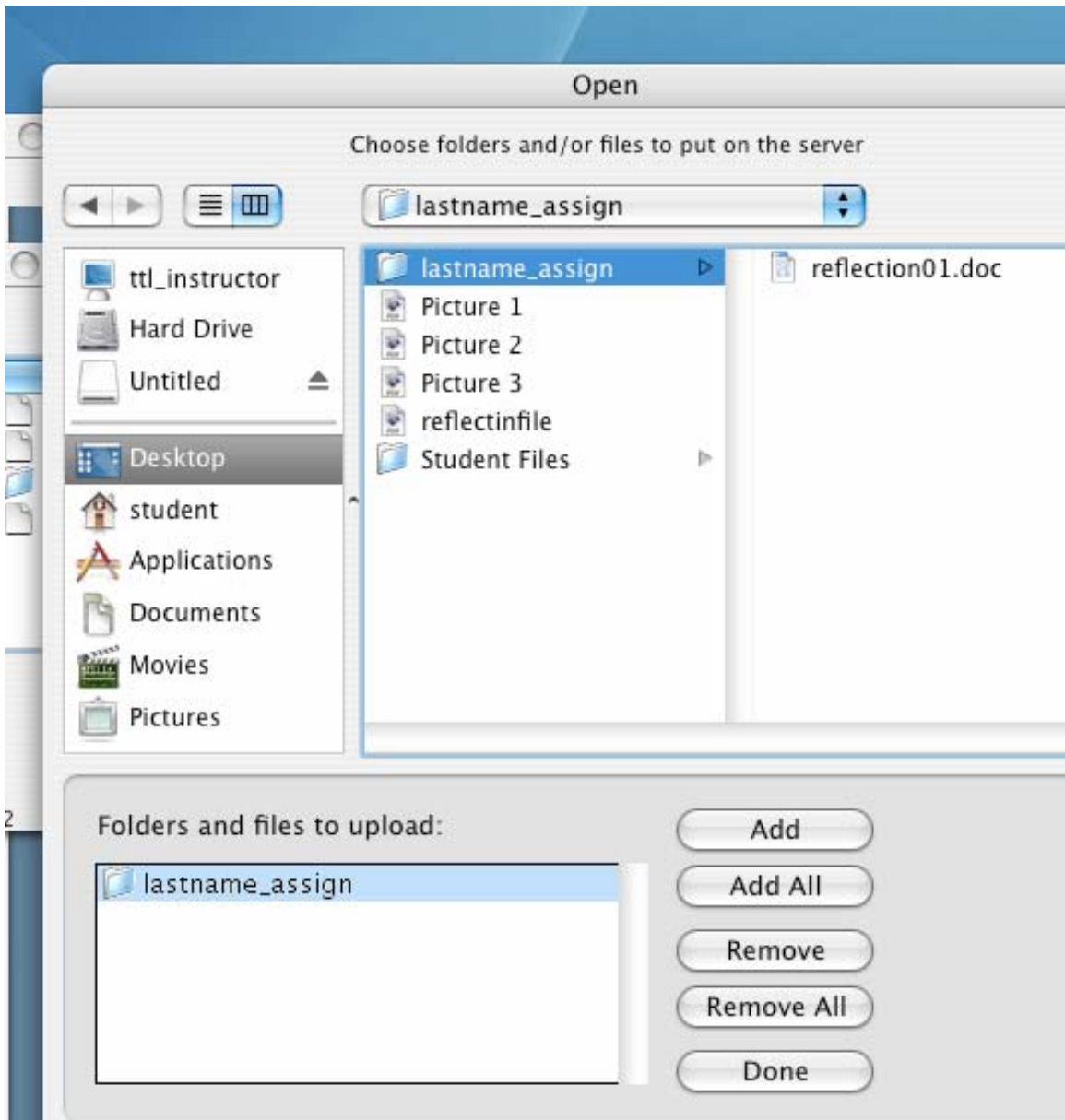
6- Enter your username and password in the appropriate windows



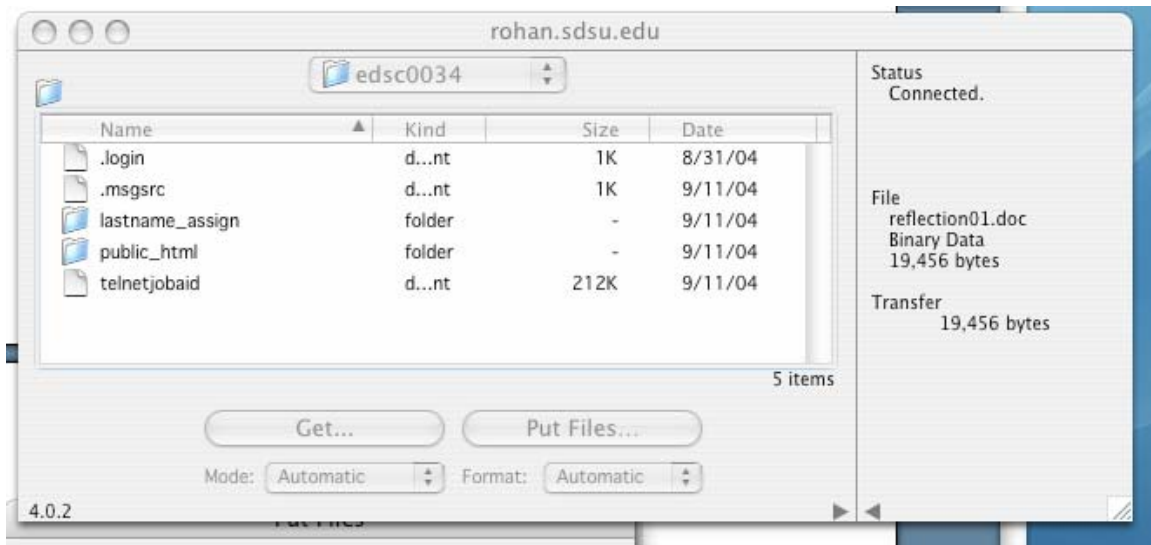
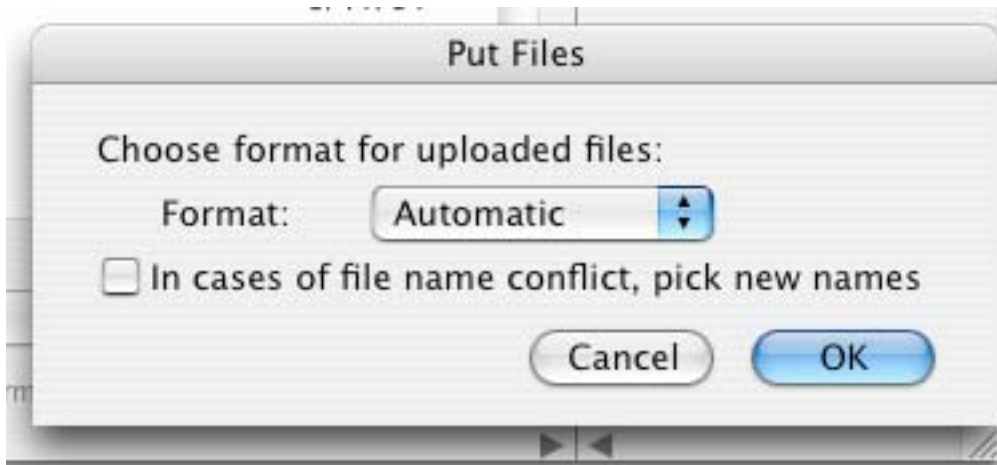
7- Under menu item "Remote" click on "Put Folders and Files"



- 8- Click on the "lastname_assign" folder
- 9- Click on the "Add" button, and then on the "Done" button



10-Click on the “Ok” button to upload your folder



11- You will see your folder on the server window